

# NuWav-MDSS

## Microwave Distillation System



**Now with  
Explo-Protect  
Chamber Security  
Mechanism**

**Over 30 Years of Cumulative Experience in Microwave Reactor Systems  
1st Microwave Distillation to be constructed COMPLETELY of Stainless Steel 316L  
Unparalleled Precision and Control paired with Multiple Safety Parameters**



Versatility of controlling Temperature and Microwave Power through Precise Sensors

Exclusively Innovated Explo-Protect Chamber Security Mechanism

Completely Constructed from Industrial Grade 316L Stainless Steel

Large volumes (Upto 10Litres) can be distilled in a Compact Frame Instrument

NuWav-MDSS Microwave Distillation System, a sub-version of tradition, is a user-oriented practical compact Microwave Reactor made by Nutech with over 30-years of combined experience in Microwave Technology. Work effortlessly and hassle-free with the most advanced and precise Microwave Distillation System available. NuWav-MDSS provides safety, unparalleled durability and convenience of operation yet assuring a plethora of customisable parameters.

- Full Industrial grade 316L Stainless Steel Construction
- Small size for convenience
- New Intelli-System designed for virtually effortless operation
- Efficient and Precise power delivery for optimum results
- High Resolution Acid-Resistant Wide Format Touchscreen
- Large 7-inch screen with integrated Graphical UI
- System provides Pre-Set Modes for the user's ease
- Real-time temperature, instantaneous power, stirring speed, total time, time remaining, reaction graphs are displayed
- Integrated step-by-step guidance for reactions
- Safety/Security and overshoot warnings for the user
- Intelligent Internal Sensors for system safety monitoring
- Forced Air-Cooling System with unique exhaust design
- Dynamic adjustment of Microwave power based on reaction
- Non-pulsating and continuous heating controllable in 1Watt increments
- Optimised position of magnetron for low-trajectory Microwave introduction
- High-precision German-Engineered IR temperature sensor
- Temperature sensor provide for a stable temperature hold time
- High power Magnetic Stirrer with adjustable stirring speed
- Equipped with Reflux System
- Condensation and Circumfluence attachments available
- Integrated Inert Gas Purging System
- HD-Camera & External High-Resolution TFT for viewing reaction
- Reactions vessels available in Glass
- Reactions vessels available in Quartz(OPTIONAL)
- Vessel capacity ranging from 10ml to 1000ml(OPTIONAL ACCESSORIES)
- Wireless HD VIDEO LIVE STREAMING SYSTEM (OPTIONAL ACCESSORY)





- The system dynamically adjusts microwave power based on reaction temperature to generate non-pulse and continuous heating with a minimum increment of 1 Watt. Optimised placement of the magnetron for low trajectory of microwave introduction ensures maximum efficiency heating. High Precision German Engineered IR sensor is adapted for automatic recognition and intelligent control of temperature measurement mode and maximum temperature to meet the need of different reaction containers and media. High Speed Magnetic stirring with adjustable Stirring speed and displaying. The Product is equipped with condensation, reflux and inert gas purging facility. HD camera is installed for the observation of the process and status of the reaction in the vessels via TFT colour liquid display.



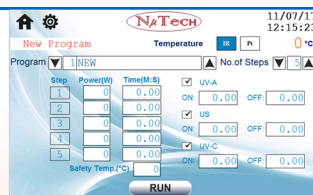
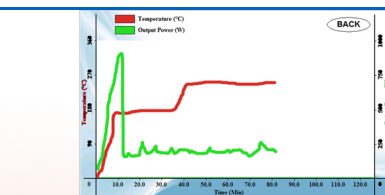
- Sturdy and Durable Industrial Grade Stainless Steel 316L construction of the whole Instrument Structure ensures no rust and a long lifespan of the NuWav-MDSS without any maintenance. Professional Focused Microwave design provides for High Efficiency heating. Multi-layer chemical resistant colour coating of the whole instrument improves service life and safety of the system. The Explo-Protex Chamber Security Mechanism pops-up the door(4-12mm depending on the pressure), releases the pressure and pops back to its closed position in case of an explosion inside the reaction chamber thus providing a layer of safety to the user. Double Locked Self-Checking System and Push-Button Door release ensures simple and easy operation yet providing safety to the user. High Speed Air Cooling and Exhaust Systems achieves fast cooling and unparalleled exhaust, improving operational efficiency.



- Industry's 1st Intelli-System integrated in a 7-Inch Acid/Corrosion Resistant Touchscreen with a Graphical UI makes operating the NuWav-MDSS effortless. The system provides Pre-Set modes and step-by-step guidance for the user's ease. All vital information such as Real-Time Temperature, Instantaneous Power Output, Safety Power / Temperature, Hold time, Time Left, Total Elapsed Time, Process Name as well as Real-Time Temperature-Power (in different colours and scale and are switchable) vs. Time Graph is displayed. Conversion of Conventional conditions to Microwave Distillation parameters are provided in the system. Safety/security warnings (Door Ajar, Cooling and Exhaust System Fan Malfunctions and RPM), Process Completion are indicated to the user.



- The Intelli-System's internal algorithm dynamically controls the Microwave Power based on Real-Time conditions thus eliminating any Temperature Overshoot. Non-Pulse Low-Trajectory Microwave Power is controllable in 1Watt increments. In case of any anomalies, the system warns the user and stops operating thus providing the user another layer of safety. Distillation Programs can be saved, edited and sorted by Name/Date for later use, each program having upto 5 steps of inputs of Temperature, Power, Hold-Time as well as Safety Temperature, Safety Power Cut-Off parameter inputs. The sensing, control capabilities and integrated safety parameters of the system makes the Intelli-System the most versatile and user friendly system which is way ahead of time.



# Technical Specifications Of NuWav-MDSS Microwave Distillation System

<b>Microwave Frequency</b>	2450 MHz
<b>Installed Microwave Power</b>	1800 Watt
<b>Construction:</b>	
<b>External Structure</b>	Industrial Grade 316L Stainless Steel
<b>Internal Microwave Chamber</b>	Industrial Grade 316L Stainless Steel
<b>Maximum Output Power</b>	1000 W, Non-Pulsed Continuous Automatic Variable Frequency Control with an increment of 1 Watt
<b>Temperature Measurement and Control System</b>	High Precision German Engineered IR Sensor; Operating from 0°C to 300°C, Precision : +/- 1°C (Threshold Temperature is from Ambient to 350°C )
<b>Monitoring</b>	HD-Camera with External 4.3 inch TFT Display
<b>Main-Display</b>	Large (7") Wide-Format, High-Resolution(800 x 480) Acid-Resistant Touch Screen
<b>Software</b>	Versatile software to precisely control and adjust Microwave Power, Temperature. Real-time parameters such as Total Time, Stirring Speed, Instantaneous Temperature and Power, Etc. are displayed Temperature-Power vs. Time Graphical representation
<b>User Interface</b>	Icon based GUI. Graphical Output. Real Time Status Display. Easy Setup
<b>Memory</b>	Virtually Unlimited Process Storage
<b>Safety</b>	Intelligent Overheat Cut-Off. System cooling malfunction warning. Door ajar warning. (With Message and Buzzer)
<b>Magnetic Stirring</b>	High Speed Magnetic Stirrer with Adjustable Speed and RPM display
<b>Exhaust system of chamber</b>	Corrosion-Resistant motor, with Air rate of 3.8 m <sup>3</sup> /min
<b>Integrated</b>	System is equipped with Inert Gas Purging facility, Reflux and LED light
<b>Flasks</b>	Glass (3000ml, 5000ml & 10,000ml)
<b>Accessories</b>	Reflux Condensing Pipe, Balance Dispenser, Oil-water Separator, Connectors, Stoppers, Stirring Beads, T-Stand, etc.
<b>Working Environment Conditions</b>	10°C - 50°C, Well Ventilated, Dust-Free Environment 15%-80% Humidity, Non-Condensing Microwave and Corrosion Shielded Components
<b>Operating Voltage And Current</b>	220/240 VAC, Non-Fluctuating Supply                      110/120VAC(Optional) 50/60 Hz 15 Amp
<b>Dimensions</b>	450 mm x 515 mm x 510 mm (WxDxH)
<b>Net Weight</b>	65 Kgs

## Optional Accessories :

<b>Glass Vessels</b>	25ml, 50ml, 100ml, 250ml, 500ml, 1000ml
<b>Quartz Vessels</b>	25ml, 50ml, 100ml, 250ml, 500ml, 1000ml
<b>Wireless Video System</b>	Wireless FHD Video Live Stream, Recording and Snapshot capabilities. Multiple device connectivity.

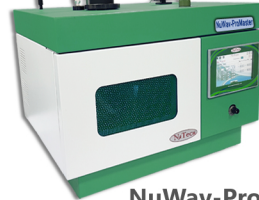
## Our Other Products:

Microwave Digestion System



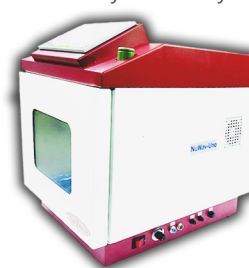
NuWav-Ultra

Microwave UV-Ultrasonic Combined Synthesis/ Extraction System with Pressurised-Reactor



NuWav-ProMaster

Microwave Synthesis System



NuWav-Uono

\*Actual colour and design may vary.

## NutechAnalytical Technologies Private Limited

Address: 78, Nagendra Nath Road, Dumdum,  
Kolkata- 700-028. West Bengal. India.

Tel: (0091 33) 2579-8910 / 2551-0554

Fax: (0091 33) 2579-8910

Mob: (+91) 9831021934 / 9903890870 / 9903216822

E-Mail: sales@nutechanalytical.com

[www.nutechanalytical.com](http://www.nutechanalytical.com)

Local Rep.:

**NSIC**  
CERTIFIED CO.

**MSME**  
MICRO, SMALL & MEDIUM ENTERPRISES  
सूक्ष्म, लघु एवं मझम उद्यम

**ISO**  
9001:2015

**CE**